

Choose between Basic or Cloud mode.

To change this setting afterwards, a full reset of the ES4-controller is required

Basic

- Keypad required
- Programming via keypad possible
- Up to a 100 codes via app

- Operation **only** with keypad
- Works without an Internet connection
- Management only with a local Wi-Fi connection
- No event log
- Control up to two doors



Continue on the next page

Cloud

- Keypad optional
- Programming via keypad **not** possible
- Up to 500 users (depending on your subscription)
- Operation possible via app, keypad, ..
- **Requires an Internet connection**
- Management from anywhere in the world via the app or web portal
- Extensive log and notifications
- Control up to 40 doors

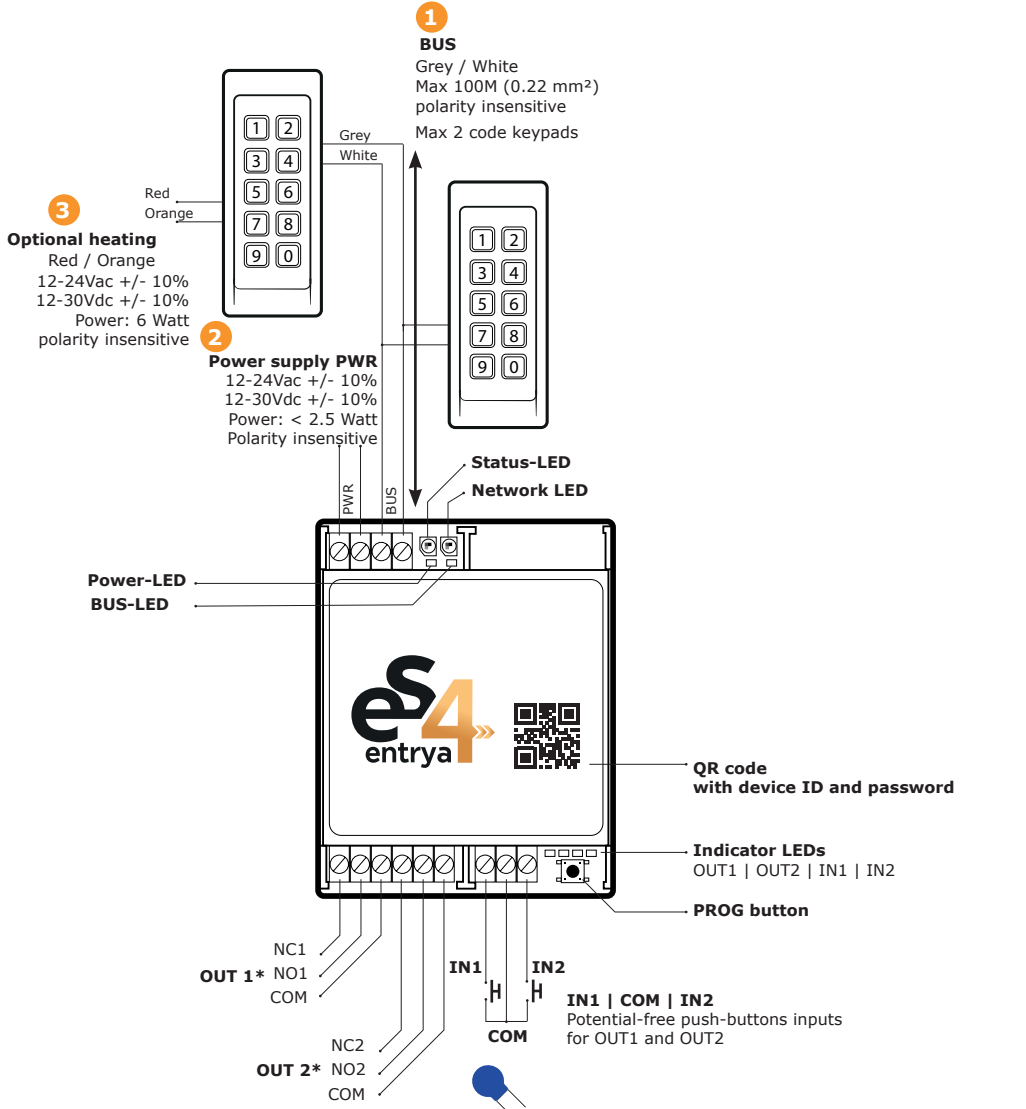


Download the Cloud manual

Download the manual at
<https://es4-manual.docsdirect.net>



Overview



*Max. 24Vdc 1A / 24Vac 0.5A

! Install a free-wheeling diode or varistor in parallel across the relay output when connecting an inductive load (lock, magnet) !

The system uses a two-wire BUS for the code keypads. Two code keypads can be connected to one ES4 controller.

- 1 Connect the code keypad to the ES4 controller. Connect the grey and white wires to the BUS connection on the controller. The polarity is not important.
- 2 Connect a power supply to the PWR connection on the controller. The polarity is not important.
- 3 Optionally, connect a power supply for heating the code keypad to the orange and red wires of the code keypad. The polarity is not important.

Safety regulations

- These installation and operating instructions must be read, understood and observed by the person who installs, uses or maintains the equipment.
- Only use original spare parts and accessories.
- The user must be informed that if installations that pose a risk of accidents are operated remotely, this may only be done if the installation is kept in direct view.
- The controller outputs may only be activated if the movement of the door can be seen and there are no persons or objects within the movement radius.
- A code keypad must not be placed within the door's radius of movement.
- Install a code keypad so that the remotely controlled device is kept in direct view.
- Never clean a code keypad or controller with water under high pressure. Water can penetrate and cause irreparable damage.

Assembly

Mount the controller and code keypad(s) on a flat, vibration-free surface and use appropriate mounting materials. The controller is suitable for mounting on a 35 mm DIN rail. Mount the controller in a closed enclosure and in a dry, enclosed space. Ensure that it is not accessible to unauthorised persons and children.

If the connection cable of a code keypad is extended, the bus (white and grey wire) must not be routed via a cable that also contains wires for other applications. Always use a separate cable for the code keypad bus and avoid laying it parallel to other cables over a long distance.

Normal use

- Enter a valid code. The output switches for 1 second. The switching duration can be set via the code keypad or the app.

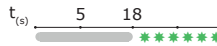
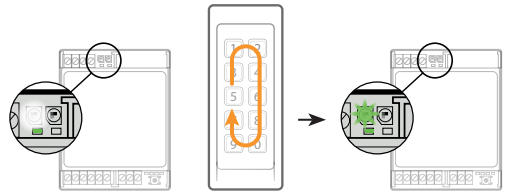
If a code has access to both outputs, the user must select the desired output (1 or 2) after entering the code.

- If an invalid code is entered, the code keypad will display an error message. The maximum time between pressing digits is 2 seconds. After 3 incorrect attempts within 60 seconds, the code keypad will be locked for 60 seconds. During this lockout, all keys will flash. These settings can be adjusted via the app.

First use

Startup

Switch on the power supply to the ES4 controller. The Power LED lights up green and the Status LED lights up white during start-up. The digits display a waiting animation. Start-up takes approximately 20 seconds. The Status LED then flashes green.

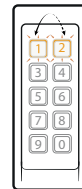


Addressing the code keypads

The code keypads must be addressed when they are first used. This allows the controller to distinguish between the two code keypads. Code keypads that do not have an address automatically enter addressing mode. Keys 1 and 2 flash.

Press 1 or 2 to assign an address to the code keypad. Both code keypads must have different addresses.

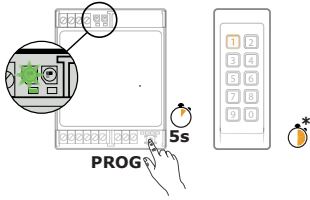
After addressing, the ES4 system is ready for programming.



Programming via code keypad

When you program the controller for the first time, the first code you add is your master code. The master code determines the length (4-8 digits) of all other codes. The master code can be used as an access code and to program additional codes and settings via the code keypad.

Start programming via controller



Start programming via master code

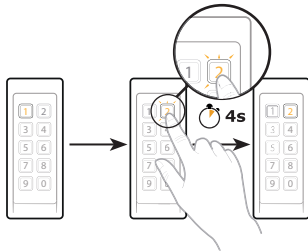
*requires a master code



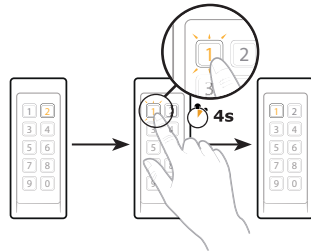
If a master code has already been programmed, you can open the programming mode by entering the master code and holding down the last digit for 5 seconds.

* Programming is automatically terminated after 30 seconds of inactivity. Press the PROG button to terminate programming immediately.

Switch to add codes or configuration of OUT 2



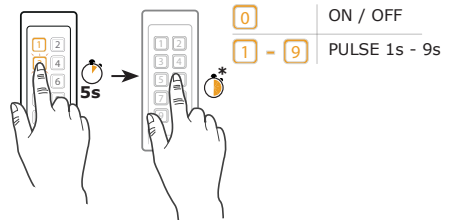
Switch to add codes or configuration of OUT 1



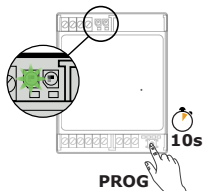
Adding a code



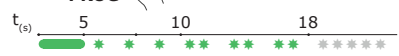
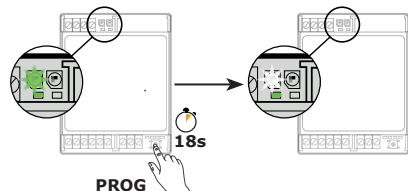
Changing the switching time



Delete all codes











Restore factory settings












After resetting the controller will reboot!

Notifications during normal use

	Key 1 flashes	OUT 1 is activated.
	Key 2 flashes	OUT 2 is activated.
	Keys 1 and 2 lit	The code entered gives access to both outputs. Select an output.
	Keys 1 and 2 flashing	The code entered gives access to both outputs, but no output has been selected.
	Key 3 flashes	The code entered is too short or you waited too long before pressing a key.
	Key 4 flashes	The code entered is correct, but does not grant access.
	All keys flash four times simultaneously at one-second intervals.	Incorrect code
	All keys flash simultaneously at 6-second intervals.	The code keypad is temporarily locked due to too many incorrect attempts.

Notifications during configuration

	Key 3 flashes	The code entered is too short or there was too long a delay between entering digits.
	Key 6 flashes	Master code is too short (minimum 4 digits)
	Key 7 flashes	Master code is too long (maximum 8 digits)
	Key 8 flashing	Duplicate code, use a unique code
	Key 9 flashing	Maximum number of codes (100) reached
	Key 0 flashing	ES4 controller is connected via Wi-Fi Direct
	Waiting animation	ES4 controller is starting up
	Waiting animation	Code keypad is receiving a firmware update Do not interrupt the power supply!
	Waiting animation	Code keypad is blocked by another process on another code keypad

LED Indicators

STATUS



Normal operating mode



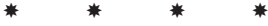
To be configured / factory settings



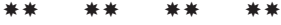
Factory settings are being loaded

NETWORK

* Wi-Fi
 * LTE
 * Ethernet



No local network connection (WLAN, LAN,..)



No Internet connection (WAN)



No Cloud-server connection



Good stable connection

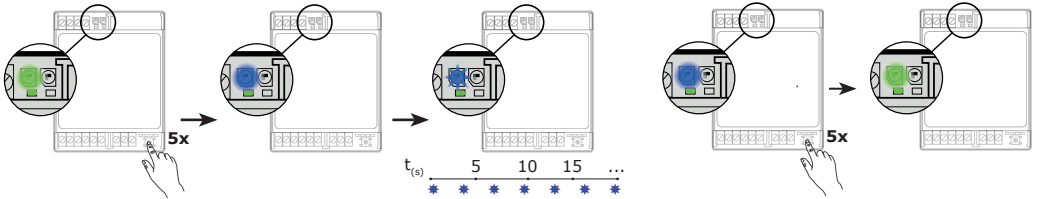


Mediocre connection

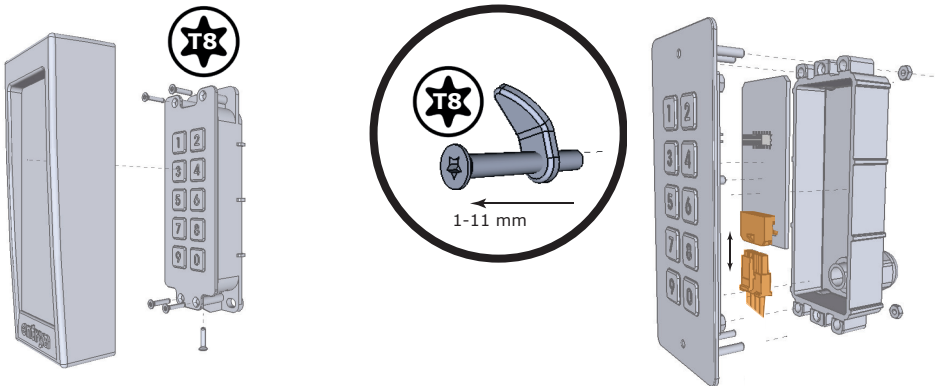


Poor connection

Enable Wi-Fi Direct



Service



Programming with App via Wifi Direct

When programming with the app via Wi-Fi Direct, a smart device establishes a direct Wi-Fi connection with the ES4 controller. This requires the smart device to have an internet connection and a registered ES4 account. (see full manual)

Additional features:

- Manage codes with user names
- Determine which output a user can operate and via which code keypad
- Import and export users in .CSV format
- Manage code keypad settings
- Install firmware updates on the controller and code keypad.

Working method

Install the Entrya ES4 App via the Google Play Store or Apple App Store.

If you do not yet have an ES4 account, please register. If you already have an account, please log in.

Select Wifi Direct and then press Add. Follow the steps requested to add a device.



Technical specifications

Code keypad KP(F)-ES4

Dimensions KP

W51 x H130 x D28 mm

Dimensions KPF

W52 x H120 x D22 mm (+ cable gland 25 mm)

IP rating

IP55 (KPF-ES4: IP65)

Optional heating power

6 W

ES4 controller

Dimensions

W70 x H90 x D32 mm

IP rating

IP20

Temperature range

-25°C to 50°C

Relative humidity

0 to 95%

Power consumption

< 2,5 W

Number of codes (Basic Mode)

100

Code length

4 - 8 digits

Wi-Fi radio frequency

2.4 GHz

Supply voltage

12-24 Vac; 12-30 Vdc ±10%

Power

< 2.5 W

Warranty

Entrya code keyboards and controllers are covered by a five-year warranty against manufacturing defects. Normal wear and tear, such as discolouration caused by sunlight, is not covered by the warranty. The warranty is fully in accordance with legal provisions. For any warranty claims, please contact your distributor. Warranty claims only apply to the country in which the code keypad and/or controller was sold.

If you require customer service, spare parts or accessories, please contact your distributor.

CE Certificate of Conformity

Entrya Technologies BV hereby declares that the ES4 radio equipment type complies with Directive 2014/53/EU.
<https://www.entrya.com/ce>

Waste disposal

This product consists of various components that may contain pollutants. Do not dispose of them in the environment! Find out about recycling or waste disposal systems for this product and comply with the legal provisions in force at the place of use.

